

OVERHEAD TOOLS & ACCESSORIES





INDEX

OVERHEAD TOOLS & ACCESSORIES

CODE	TYPE	
CAA-TAP	Anti-Lifting Automatic Release Pulley & Lifting Tackles	11.10
MOT	Self Gripping Clamps	11.15
MOS	Radial Locking Clamps	11.20
PRT	Hydraulic Compressor	11.25
PG-TET	Cover Joints/Thermometers	11.35
PAX/TFX	Lifting Hoists & Manual Winches	11.40
PAX/TFX	Lifting Hoists & Manual Winches	11.45
TN-TGP001	Cable Cutters & Zoom Sag-Scope	11.50
DLC001-DLE	Meter Counter & Dynamometers	11.55
MTR-MTF	Grounding Devices	11.60
DPC-DPI	Safety Equipment	11.65

OVERHEAD TOOLS & ACCESSORIES

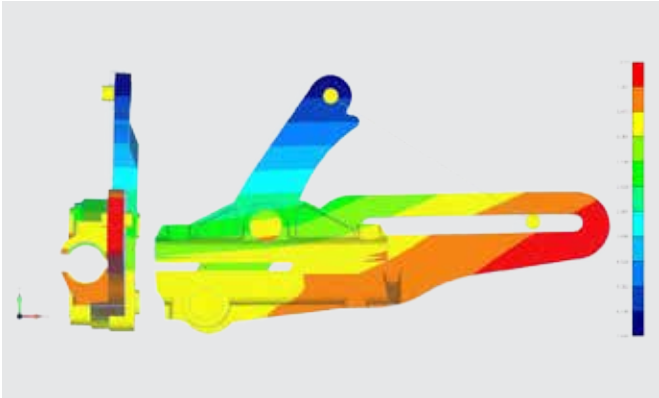
A complete offer down to the last details

In more than 60 years of experience Tesmec has developed a complete offer of tools and accessories that integrates the standard machines and equipment range.

Tesmec takes care of all the aspects of jobsite paying attention to the details that ensure the efficiency of the operations and furthermore the safety of the operators.



OVERHEAD TOOLS & ACCESSORIES: OUR VALUE PROPOSITION



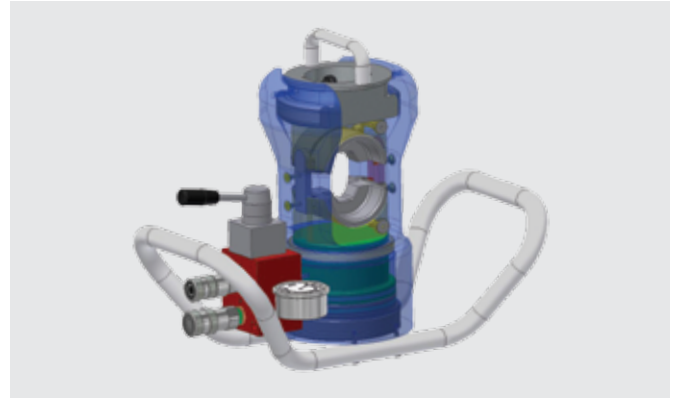
SELF-GRIPPING CLAMPS

Tesmec clamps can be used on conductors, ropes or optical ground wires of different diameters only by replacing the jaws, reducing operating costs.

The clamps can be provided with machined body clamps or with interchangeable jaws.

The body is made of high strength hot forged steel, in order to minimise the ratio between weight and working load.

The galvanisation treatment on the surface protects from oxidation ensuring safety and efficiency to every job.



NEW LIGHTWEIGHT HYDRAULIC COMPRESSOR

Simple and compact, double-acting hydraulic integrated distributor, this hydraulic compressor is suitable for midspan and dead end joints.

It is the only compressor that can accommodate different die holders for using all existing main dies on the market!

Dies can be replaced just by pushing a button, without tools.

The 100 tons model PRT510: ease of use and handling have been defined as two target features of this new project.



TOOLS FOR ANY NEED

Tesmec meets the needs of every customer offering a complete package of solutions.

The attention for safety and efficiency of the operations is always a guideline for Tesmec proposing a complete catalogue of accessories specifically selected for an efficient jobsite.



MOS BOLTED CLAMPS

Large range of clamps for any rope and conductor diameter, and for working load going from 40 to 200 kN.

Extreme testing process ensuring use of MOS clamps on HTLS avoiding marks and damage.

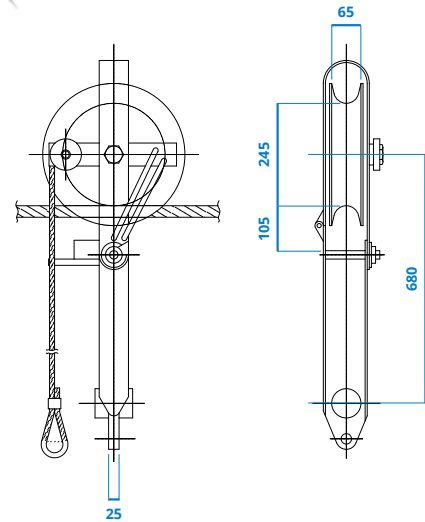
CAA

ANTI-LIFTING AUTOMATIC RELEASE PULLEY

THE ANTI-LIFTING AUTOMATIC RELEASE PULLEY IS A SPECIAL DEVICE THAT PREVENTS THE PULLING ROPE LIFTING WITH RESPECT TO THE THEORETICAL LINE, SPECIFICALLY IN CASE OF TOWERS WITH CONSIDERABLE HEIGHT DIFFERENCES. IT IS EQUIPPED WITH AN AUTOMATIC RELEASE SYSTEM TO FACILITATE RECOVERY OPERATIONS. THE WHEEL IS MADE OF GALVANIZED STEEL AND MOUNTED ON BALL BEARINGS; THE PULLEY FRAME IS MADE OF GALVANIZED STEEL.



CAA202



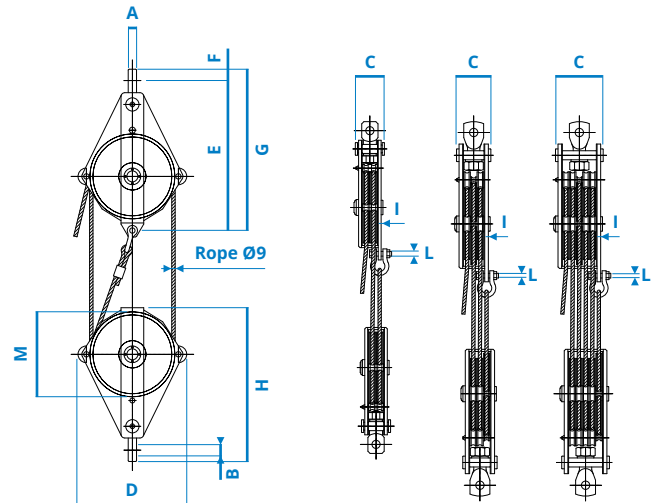
CHARACTERISTICS

WORKING LOAD	27 kN
WEIGHT	20 kg

TAP

LIFTING TACKLES

THE LIFTING TACKLES ARE SUITABLE FOR Ø 9 MM STEEL ROPES; THE WHEELS ARE MOUNTED ON BALL BEARINGS. THE FRAME IS MADE OF GALVANIZED STEEL. ROPE AND SWIVEL JOINT NOT INCLUDED.



MODEL	DIMENSIONS [MM]											PULLING FORCE/LIFTING LOAD	WORKING LOAD [kN]	WEIGHT [kg]
	A	B	C	D	E	F	G	H	I	L	M			
TAP001	22	20	67	242	333	20	353	331	8	10.5	180	1:4	30	17
TAP010	22	23	85	294	380	28	408	386	10	16	180	1:6	50	27
TAP020	22	26	120	294	405	35	440	415	10	10.5	180	1:10	80	42

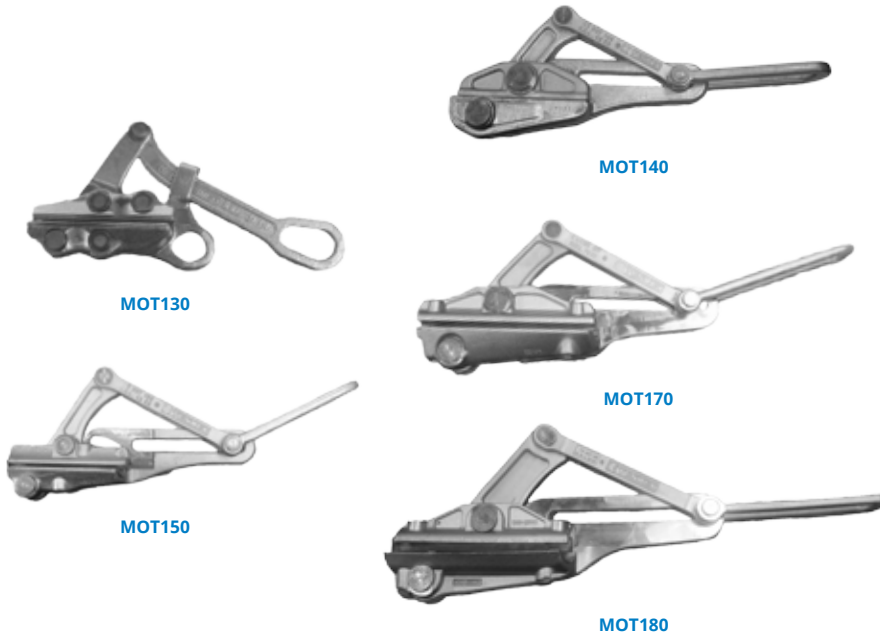
Suitable rope Mod. FUZ009 diameter 9 mm Suitable swivel Model GGT001

MOT

SELF GRIPPING CLAMPS

THE SELF-GRIPPING CLAMPS CAN BE USED TO ANCHOR AND TO STRING CONDUCTORS AND STEEL ROPE.

THE BODY IS MADE OF HIGH STRENGTH HOT FORGED STEEL, IN ORDER TO MINIMISE THE RATIO BETWEEN WEIGHT AND WORKING LOAD. THE GALVANISATION TREATMENT ON THE SURFACE PROTECTS FROM OXIDATION. TESMEC CLAMPS ARE PROVIDED WITH MACHINED BODY CLAMPS OR WITH INTERCHANGEABLE JAWS.

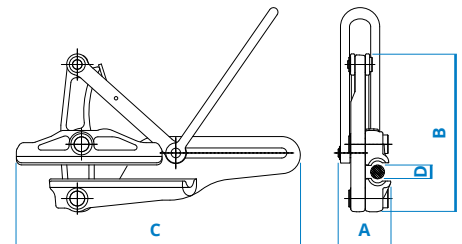


MACHINE BODY CLAMPS FOR STEEL ROPES

MODEL	DIMENSIONS [MM]			BREAKING LOAD [kN]	MAX WORKING LOAD* [kN]	WEIGHT [kg]	DIAMETER RANGE [MM] D
	A	B	C				
MOT140	80	225	380	125	42	7	8÷18
MOT170SF	108	300	535	225	75	15	18÷24
MOT170SF28	108	300	535	225	75	15	24÷28
MOT180SF	114	353	604	280	93	19.5	27÷32

*Special clamps available also for conductors

*Max safe working load may change according to local safety factor standards



Warning: it is strictly forbidden to use jaws of different manufacturer.

xxx Diameter to be specified

INTERCHANGEABLE JAWLS CLAMPS FOR CONDUCTORS & OPGW

CLAMP MODEL	DIMENSIONS [MM]			BREAKING LOAD [kN]	MAX WORKING LOAD* [kN]	WEIGHT [kg]	JAWS MODEL	D [MM]	USE
	A	B	C						
MOT130GC	-	-	-	64	21	2.5	GTF110	7 ÷ 10	Aluminium conductor
							GTF113	10 ÷ 13	Aluminium conductor
							GTF116	13 ÷ 16	Aluminium conductor
MOT150GC	80	225	380	125	42	7	GTJ117	14 ÷ 17	Aluminium conductor
							GTJ120	17 ÷ 20	Aluminium conductor
							GTJ123	20 ÷ 23	Aluminium conductor
							GTOXXX	06 ÷ 23	OPGW
							GTX220	17 ÷ 20	Aluminium conductor
MOT170GC	108	300	535	225	75	15	GTX223	20 ÷ 23	Aluminium conductor
							GTX226	22.8 ÷ 26	Aluminium conductor
							GTX229	26 ÷ 29	Aluminium conductor
							GTX232	29 ÷ 32	Aluminium conductor
							GTX233	30 ÷ 33	Aluminium conductor
							GTJ335	32 ÷ 35	Aluminium conductor
MOT180GC	114	353	604	280	93	19.5	GTJ338	35 ÷ 38	Aluminium conductor
							GTJ341	38 ÷ 41	Aluminium conductor
							GTJ344	41 ÷ 44	Aluminium conductor
							GTJ346	43 ÷ 46	Aluminium conductor

MOS

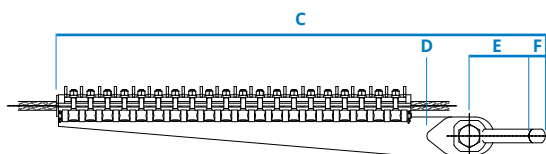
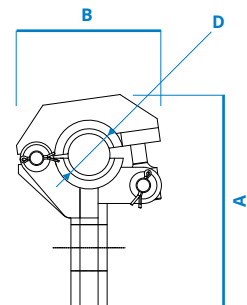
RADIAL LOCKING CLAMPS

DESIGNED FOR LONG PERIOD ANCHORAGE
SAFE & GENTLE ON CONDUCTORS



NUMBER OF EYEBOLTS	STANDARD DIAMETER RANGE [MM]						C	E	F	MAX WORKING LOAD [kN]	WEIGHT MIN [kg]	WEIGHT MAX [kg]
	20-30		30-40		40-56							
	DIMENSIONS [MM]											
4	MOS700	MOS701	MOS702				605	75	26	40	18	19
	158	143	169	143	178	158						
6	MOS710	MOS711	MOS712				735	93	26	60	25	28
	158	143	169	143	178	158						
8	MOS720	MOS721	MOS722				852	93	26	80	30	33
	158	143	169	143	178	158						
10	MOS730	MOS731	MOS732				995	93	32	100	39	41
	158	143	169	143	178	158						
12	MOS740	MOS741	MOS742				1100	93	32	120	41	43
	158	143	169	143	178	158						
14	MOS750	MOS751	MOS752				1210	93	35	140	43	47
	158	143	169	143	178	158						
15	MOS753	MOS754	MOS755				1285	93	35	150	55	61
	158	143	169	143	178	158						
16	MOS760	MOS761	MOS762				1360	93	45	160	67	75
	158	143	169	143	178	158						
18	MOS770	MOS771	MOS772				1510	93	45	180	79	89
	158	143	169	143	178	158						
20	MOS780	MOS781	MOS782				1670	93	45	200	92	104
	158	143	169	143	221	158						

The radial locking clamp can be used whenever a conductor or a rope made of aluminium, aluminium/steel, copper or steel has to be stretched. The body is made of high-strength steel. It is made up of a series of hinged elements, which can be locked by nuts. The interchangeable jaws are made of aluminium. A special hook is provided at one end. The galvanisation treatment on the surface protects from oxidation.



D = conductor diameter to be specified

Different jaws out of the standard diameter range are available upon request

Pictures & drawings can be different according to technical specifications - updating programme variations without notice are possible.

Certified Quality System
ISO 9001:2015

Certified Environmental System
ISO 14001:2015

Certified Health & Safety System
ISO 45001:2018



PRT510



PRT060



PRT020

PRT

HYDRAULIC COMPRESSORS

DOUBLE EFFECT
EXTRA LONG LIFE CYCLE

MODEL	PISTON RETURN	MAX COMPRESSION FORCE [kN]	MAX PRESSURE [bar]	MAX HEXAGON "CH" FOR STEEL [mm]	MAX HEXAGON "CH" FOR ALUMINIUM [mm]	MAX STROKE [mm]	PRESS WEIGHT [kg]	DIE WEIGHT [kg]	DIMENSIONS (BXLXH) [mm]
PRT510	Hydraulic	1000	700	29	60	31	34.5	2	480
									255
									387
PRT060	Hydraulic	1200	700	35	65	34	52	2	520
									280
									450
PRT020	Hydraulic	1840	700	54	90	44	145	5.5	600
									430
									600

The hydraulic compressors, mainly implemented in press forged steel, have the following characteristics:

excellent weight/power ratio

very short pressing cycle (all the presses have an hydraulically-driven piston release)

each power unit or manual hydraulic pump (and hoses) is interchangeable with any hydraulic press

PRT

ACCESSORIES FOR HYDRAULIC COMPRESSORS



HYDRAULIC POWER UNITS



MANUAL PUMP

HYDRAULIC POWER UNITS MOD. CPP

MODEL	ENGINE	POWER [kW]	MAX PRESSURE [bar]	MAX DELIVERY [l/min.]	TANK CAPACITY [l]	WEIGHT [kg]	DIMENSIONS (BXLXH) [mm]
CPP001	Gasoline	3.2	700	1.8	10	54	530
							340
							370
CPP004	Electrical 220V-50Hz	2.2	700	1.8	10	50	530
							340
							370

Note: the performance is calculated at 20°C and at sea level

MANUAL PUMP MOD PDP001

MODEL	MAX PRESSURE [bar]	DELIVERY [CM3 / CYCLE]		CAPACITY [l]	WEIGHT WITHOUT OIL [kg]	DIMENSIONS (BXLXH) [mm]
		1st stage	2nd stage			
PDP001	700	17.5	2.7	3.4	8.5	550 160 170

KIT OF CONNECTING HOSES MOD. TUP

MODEL	LENGTH [M]
TUP013	3
TUP014	6
TUP015	10
TUP016	15
TUP017	30

DIES FOR CONDUCTORS MOD. PDM

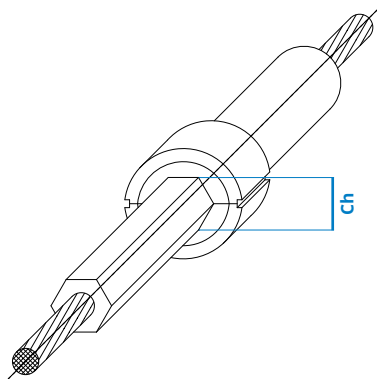
PRESS MODEL	JOINT MATERIAL	DIE MODEL	
		HEXAGONAL	CIRCULAR
PRT510 (1000 KN)	Steel	PDM042	-
	Aluminium	PDM043	-
	Almelec	PDM044	-
PRT060 (1200 KN)	Copper	PDM038	-
	Steel	PDM042	PDM048
	Aluminium	PDM043	PDM049
PRT020 (1840 KN)	Almelec	PDM044	-
	Steel	PDM045	PDM054
	Aluminium	PDM046	PDM055
	Almelec	PDM047	-

DIES FOR COUPLING MOD. PDM

MODEL	DIES
PRT510	PDM026
PRT060	PDM026
PRT020	PDM027

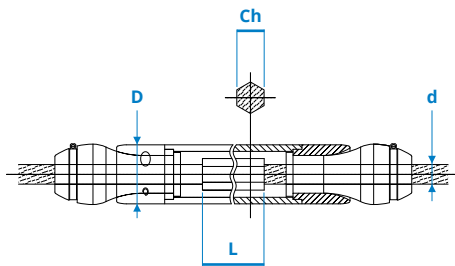
STRAIGHTENING JOINT DEVICES MOD. PDR

MODEL	STRAIGHTENING JOINT DEVICE MODEL
PRT510 (1000 KN)	PDR007
PRT060 (1200 KN)	PDR007
PRT020 (1840 KN)	PDR010



ch = hexagonal key dimension to be specified

Special dies are available upon request



MODEL	APPLICATION	CH MAX [mm]	MAX DIAMETER _r [mm]	L MAX (STD) ** [mm]	WORKING LOAD * (AT THE EDGES) [kN]
PGC	For pulley with 54 mm groove	28	18	600	2.5 ÷ 5
PGS	For pulley with 68 mm groove	37	25	1000	4 ÷ 6.5
PGM	For pulley with 68 mm groove	48	31.5	1050	2 ÷ 5
PGL	For pulley with 95 mm groove	56	47	1300	max 6.5
PGX	For pulley with 130 mm groove	82	54	2000	5

*changes with length

**different lengths are available upon request

Following data to be specified:

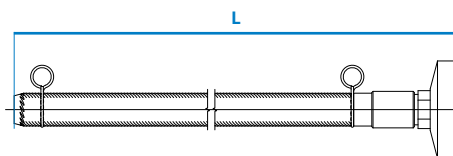
1) L = joint length after compression

2) d = conductor diameter

3) ch = the hexagon dimension of mid span joint after compression



TET060



TET THERMOMETERS

THE THERMOMETERS ARE MADE OF AN ALUMINIUM BULB REPRODUCING THE CONDUCTOR'S SURFACE.

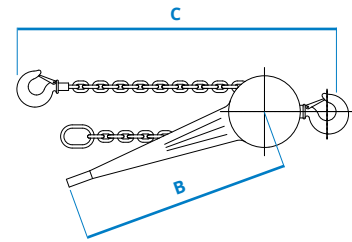
MODEL	LENGTH [m]	WEIGHT (INDICATIVE) [kg]
TET060	0.49	0.6 ÷ 1

Diameter "d" of the conductor to be specified

PAX

LIFTING HOISTS

THE LIFTING HOISTS ARE MADE OF STEEL AND EQUIPPED WITH MECHANICAL BRAKE; THEY ARE DESIGNED TO FACILITATE AND ACCELERATE CHAIN POSITIONING OPERATIONS. CHAINS WITH DIFFERENT LENGTHS ARE AVAILABLE UPON REQUEST.



MODEL	DIMENSIONS [MM]		CHAIN LENGTH [m]	CAPACITY [kN]	WEIGHT [kg]
	B	C			
PAX260	340	330	1,5	7,5	6,5
PAX270	408	365	1,5	15	11,3
PAX280	418	490	1,5	30	19,3
PAX290	418	620	1,5	60	31,3

TFX

MANUAL WINCHES

MANUAL WINCHES ARE DESIGNED TO PULL OR LIFT ROPES, CONDUCTORS OR LOADS.

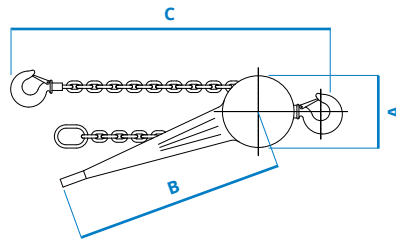


LIGHT VERSION

MODEL	ROPE Ø [mm]	LENGTH [mm]	WIDTH [mm]	WORKING LOAD [kN]	WEIGHT [kg]
TFX100	8.3	428	260	8	6
TFX110	11	545	260	16	12
TFX120	16	660	320	32	22

ROPE - TDF

MODEL	ROPE LENGTH		
	20 [m]	30 [m]	40 [m]
TFX100	TDF048	TDF049	TDF050
TFX110	TDF051	TDF052	TDF053
TFX120	TDF054	TDF055	TDF056



PAX LIFTING HOISTS

THE LIFTING HOISTS ARE MADE OF STEEL AND EQUIPPED WITH MECHANICAL BRAKE; THEY ARE DESIGNED TO FACILITATE AND ACCELERATE CHAIN POSITIONING OPERATIONS. CHAINS WITH DIFFERENT LENGTHS ARE AVAILABLE UPON REQUEST.

MODEL	DIMENSIONS [MM]			CHAIN LENGTH [m]	REQUIRED PULLING FORCE AT FULL LOAD [kN]	CAPACITY [kN]	WEIGHT [kg]
	A	B	C MIN				
PAX001	153	290	303	1.5	0.2	7.5	7
PAX002	153	290	303	3	0.2	7.5	9
PAX003	153	290	303	6	0.2	7.5	14
PAX010	160	410	365	1.5	0.21	15	11
PAX011	160	410	365	3	0.21	15	14
PAX012	160	410	365	6	0.21	15	20
PAX020	185	410	485	1.5	0.33	30	20
PAX021	185	410	485	3	0.33	30	27
PAX022	185	410	485	6	0.33	30	42
PAX030	230	410	600	1.5	0.35	60	30
PAX031	230	410	600	3	0.35	60	37
PAX032	230	410	600	6	0.35	60	52



TIRFOR®



TIRFOR®

TFX MANUAL WINCHES

MANUAL WINCHES ARE DESIGNED TO PULL OR LIFT ROPES, CONDUCTORS OR LOADS.

STAND VERSION

MODEL	ROPE Ø [mm]	LENGTH [mm]	WIDTH [mm]	WORKING LOAD [kN]	WEIGHT [kg]
TFX060	8.3	530	284	8	8.4
TFX070	11.5	558	315	16	20
TFX080	16.3	680	360	32	27

ROPE - TDF

Model	ROPE LENGTH			
	10 [m]	20 [m]	30 [m]	40 [m]
TFX060	TDF001	TDF004	TDF007	TDF010
TFX070	TDF002	TDF005	TDF008	TDF011
TFX080	TDF003	TDF006	TDF009	TDF012

TN

CABLE CUTTERS

THESE DEVICES ARE SUITABLE FOR CUTTING ROPES OR CONDUCTORS



TNM



TNI

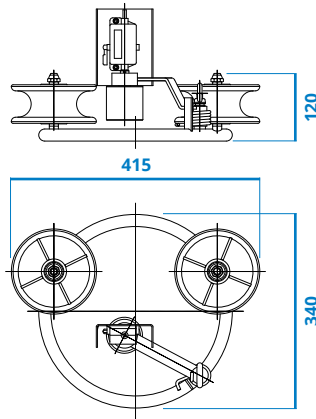
MODEL	Ø MAX STEEL ROPES R = 1.8 KN/MM ² [mm]	Ø MAX CONDUCTORS ALUMINIUM-STEEL / ALUMINIUM / COPPER [mm]	TYPE
TNM010	10	31	Mechanical
TNI030	18	25	Hydraulic
TNI001	18	45	Hydraulic

TGP001

ZOOM SAG-SCOPE

SUITABLE FOR ACCURATE CONDUCTOR SAG MEASUREMENTS. EQUIPPED WITH A SPECIAL ANCHORING SUPPORT FOR STEEL TOWER.



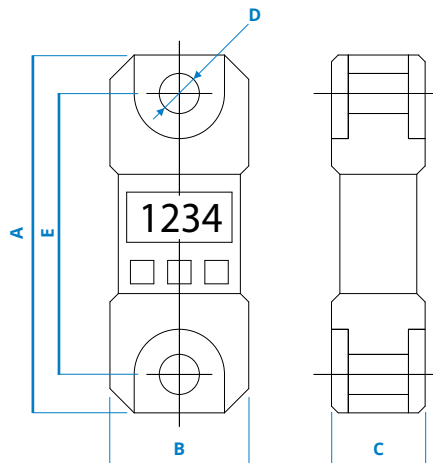


DLC001 METER COUNTER DEVICE

THIS DEVICE IS SUITABLE TO MEASURE THE LENGTH IN METERS OF THE CONDUCTORS OR THE STRINGING ROPES (AVAILABLE MODEL DLC002 WITH MEASURE IN FEET).

CHARACTERISTICS

WEIGHT	6 Kg
--------	------



DLE ELECTRONIC DYNAMOMETERS

THESE DEVICES ARE SUITABLE FOR ACCURATE MEASURE OF THE PULL VALUE. PRECISION 0,2%

MODEL	CAPACITY [kN]	DIMENSIONS [MM]					WEIGHT [kg]
		A	B	C	D	E	
DLE290	2.5	192	85	54	15	142	1.1
DLE300	5	220/192	90/85	47.5/54	14/15	182/142	1.1
DLE310	12.5	192	85	54	15	142	1.1
DLE210	25	218	90	56	21	160	1.3
DLE220	50	230	90	56	27	165	1.85
DLE230	100	310	110	58	47	196	3.8
DLE240	125	218	100	59	38	200	3.6

MTR

RUNNING EARTHS

GROUNDING DEVICE DESIGNED FOR ROPES AND CONDUCTORS DURING STRINGING OPERATIONS. IT IS EQUIPPED WITH A COPPER GROUNDING WIRE (50 MM² SECTION, 6 M LONG) FOR CONNECTION TO THE GROUND. DESIGNED FOR 10 KA EFF / 0.4 S SHORT CIRCUIT LEVEL.

CHARACTERISTICS

WEIGHT	6 Kg
GROOVE WIDTH	55 mm

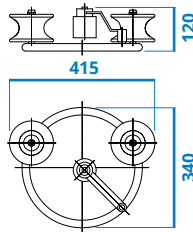
CHARACTERISTICS

WEIGHT	16 Kg
GROOVE WIDTH	70 mm

Suitable for anti-twisting device model RFF001



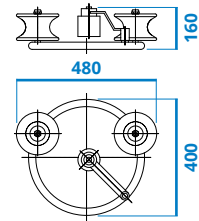
MTR001



MTR001

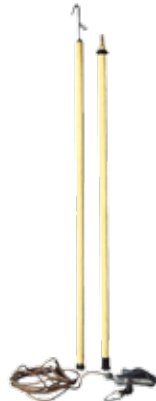


MTR052



MTF

GROUNDING DEVICES



MTF015

MTF015

for high voltage lines (130/220 kV)

The device is made of:

- 3 light aluminium alloy screw pliers for clamping conductors with diameter 5÷30 mm
- 3 copper wires insulated with transparent thermoplastic material, section 1x50 mm², total length 6 m each
- 3 ground clamps
- 1 high insulating fibre glass stick, total length 3 m
- designed for 11.25 kA eff / 1 s short circuit level

MTF016

for extra high voltage lines (400/500 kV)

The device is made of:

- 3 light aluminium alloy screw pliers for clamping conductors with diameter 5÷60 mm
- 3 copper wires insulated with transparent thermoplastic material, section 1x50 mm², total length 8 m each
- 3 ground clamps
- 1 high insulating fibre glass stick total length 4.5 m
- designed for 11.25 kA eff / 1 s short circuit level



MTF035

MTF035

for high voltage lines (60 kV)

The device is made of:

- 3 light aluminium alloy screw pliers for clamping conductors with diameter 3 ÷ 32 mm
- 2 copper wire insulated with transparent thermoplastic material, section 35 mm², total length 2.5 m each
- 1 ground clamp
- 1 high insulating fiber glass stick, total length 3 m
- designed for 8.6 kA eff/ 1 s short circuit level
- 1 ground cable copper wire insulated with transparent thermoplastic material, section 16 mm², total length 16 m
- Metallic box



DPC440



DPFXXX



DPI480



DPEXXX



DPM430



DPPXXX



DPB450



DPF470



DPA490

DPC

POSITIONING BELT

- Positioning belt for stationary work. This product is not designed for use as a fall arrest device. Features:
- 3 buckles for connecting a tool bag
- side anchoring: 2 stainless steel "D" rings

AVAILABLE DEVICES

DPF460	positioning rope 2 m
DPFXXX	positioning rope 1,5 m
DPFXXX	positioning rope 2 m

DPI

SAFETY HARNESS

- Harness with:
- a back anchor point
- a chest anchor point
- adjustable thoracic webbing with quick fitting buckle

AVAILABLE DEVICES

DPM430	Fall arrest device including 0.3 m rope
DPF470	Standard Rope: 20 m Ø 14 mm 3-strand Polyamide fibre rope
DPB450	Nylon Bag
DPA490	Connector
DPEXXX	Safety Helmet
DPPXXX	Anti-Fall Stick

DPM430

APPLICATIONS

Individual, vertical, sliding fall arrest device. It ensures protection against falls when a user moves vertically along an anchorage line (textile rope).

Description and principle

Fall arrest device; free vertical movement at normal speed. Housing may be opened by using the captive screw and flat bolt.

Locking is due to the differential speed which engages an eccentric cam during the fall, between the user and the device on its support. The energy is absorbed by the lengthening of the support (>10%) and by the sliding movement along it. The device has a locking ring which prevents attachment to the support upside down. An arrow indicates the correct direction of movement and position for attachment to the support.



